

An aerial photograph of the Otago Peninsula coastline. The image shows a large bay with a sandy beach and a prominent rocky headland. The surrounding land is covered in green hills and vegetation. The ocean is a deep blue color. The text 'OTAGO PENINSULA' is written in large yellow letters across the middle of the image, with 'The Land and its Management' written below it in smaller yellow letters.

# OTAGO PENINSULA

## The Land and its Management

Neville Peat

Maps by Allan Kynaston Design, Dunedin (Maps Copyright © Allan J Kynaston)

| KEY  |                           |
|--|---------------------------|
| Main public areas for viewing wildlife   |                           |
|  | Shoreline and Water Birds |
|  | Penguins                  |
|  | Seals & Sea lions         |
|  | Walking Track             |
|  | Golf Course               |
|  | Swimming                  |



# Otago Peninsula

# Dunedin Volcano

## Rakiriri

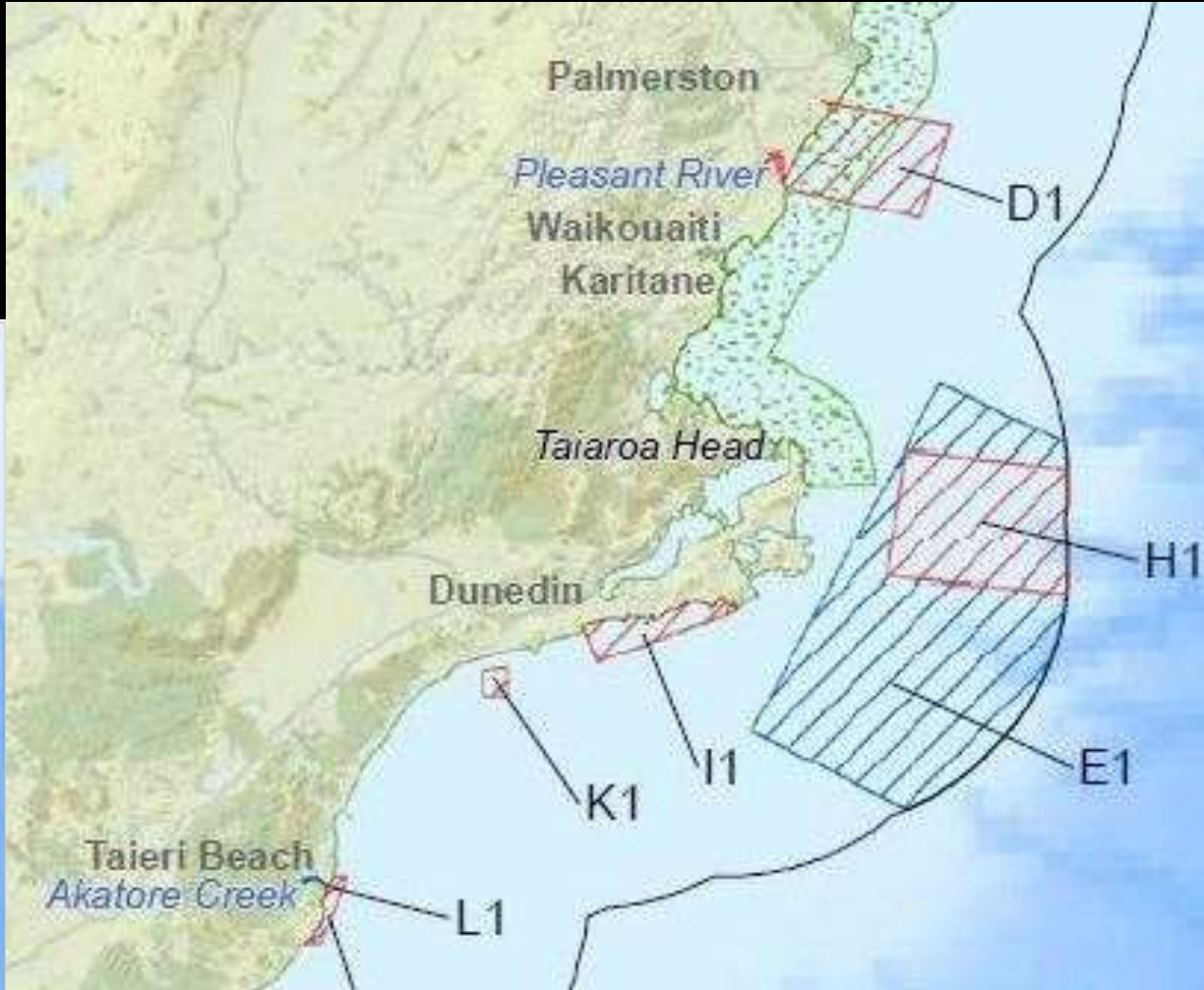
*Chris Gaskin*

## Outer Peninsula

*Lloyd Homer/GNS*







# SOUTH-EAST MARINE PROTECTION FORUM RECOMMENDATIONS

February 2018



*Perrin Tonkin*



*Stephen Jaquiere/  
Otago Daily Times*











**OKIA RESERVE**  
**NAU MAI HAERE MAI**

OKIA RESERVE IS ADMINISTERED BY  
THE DUNEDIN CITY COUNCIL, YELLOW EYED  
PENQUIN TRUST, TE HIRANGA O TARAO  
AND DEPARTMENT OF CONSERVATION

The following contributed to the purchase:

|                         |                                |
|-------------------------|--------------------------------|
| Alfred's Mollusca Trust | The Biotin Trust               |
| Dunedin City Council    | Yellow-eyed Penguin Trust      |
| Mitland Products Ltd    | and the people of<br>the South |

SIN JULY 1981











**Jointed basalt columns,  
Okia small pyramid**











**Pukekura/Red Hill  
aka Taiaroa Head**



**ICONIC SPECIES OF  
OTAGO PENINSULA:  
Why here?**











CANYONS (north to south): Pukekura, Papanui, Saunders, Taieri



# Pukekura/Taiaroa Head

Pukekura Reserves Co-Management Trust  
established 2015 by DCC, DOC, Otakou  
Rūnanga and Korako Karetai Whanau





# Pukekura (Taiaroa Head) Reserves Management Plan

March 2013





Palisade security fence

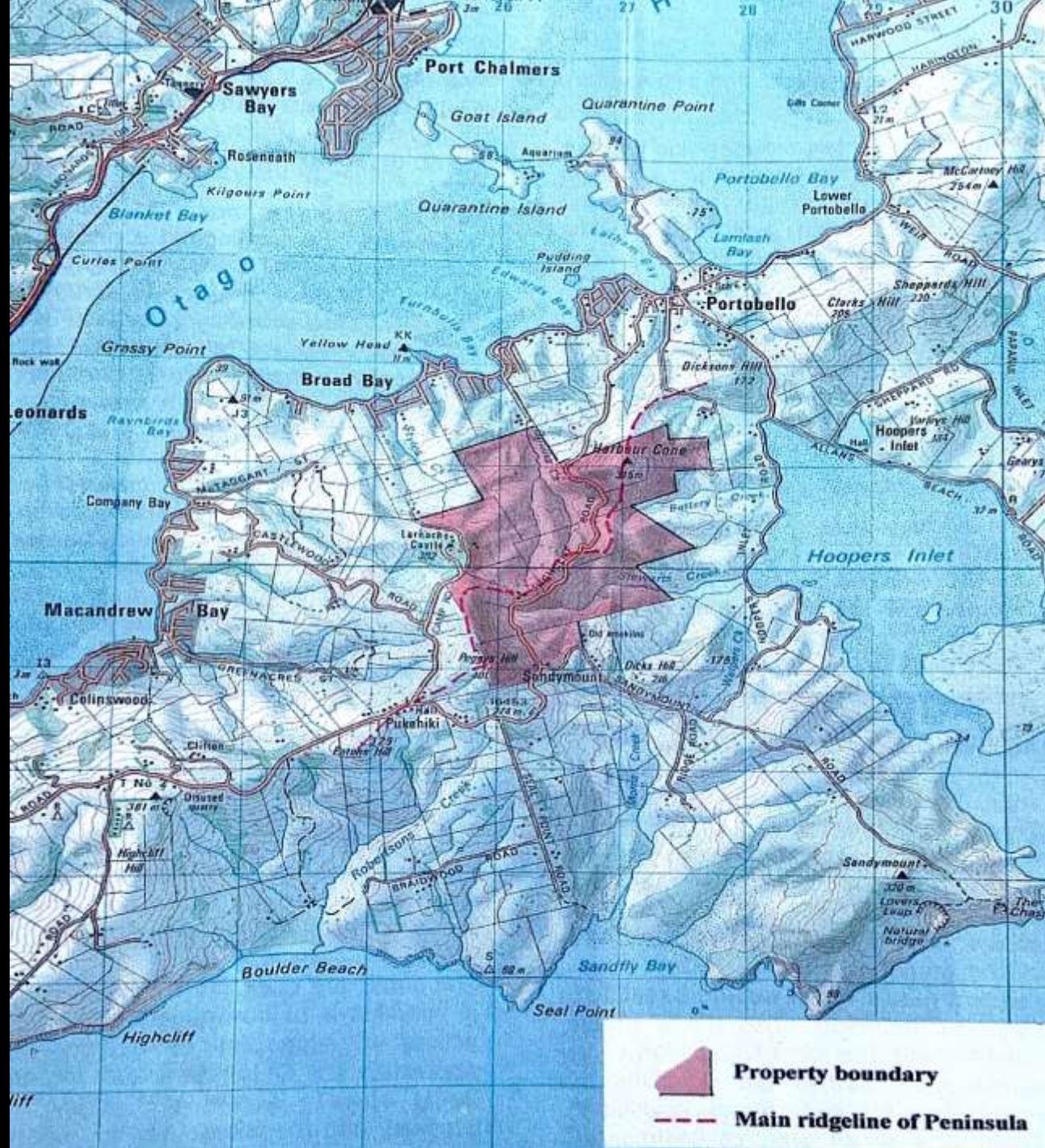
An aerial photograph of Harbour Cone, a prominent hill in the Bay of Islands, New Zealand. The hill is covered in green grass and scattered trees. At the base of the hill, there is a large, multi-story building with a complex facade, surrounded by a dense forest of tall trees. In the foreground, there is a large, circular green lawn with a central fountain, and a winding road with several parked cars. The background shows a vast landscape of rolling hills and valleys, with a large body of water (the Bay of Islands) visible in the distance under a clear blue sky.

Harbour Cone  
315 m



***Otago Peninsula series, Colin McCahon***

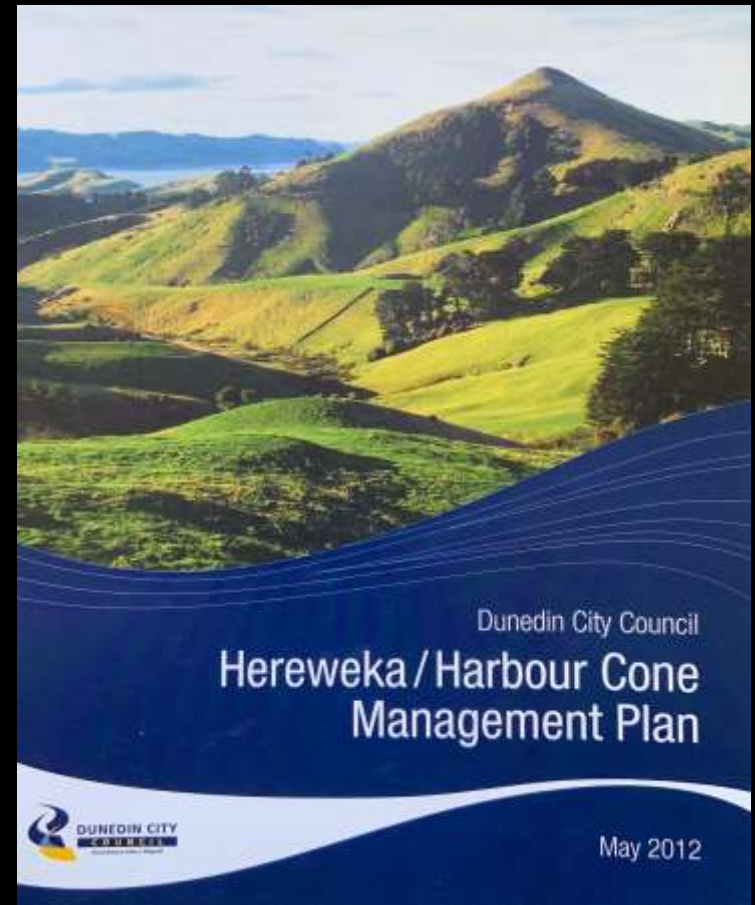
Hereweka 'Farm Park'  
footprint  
2.5 km x 2 km; 328 ha)





# Hereweka Harbour Cone Management Trust

6 community trustees,  
2 DCC trustees









Biodiversity



Built heritage



Revegetation



Recreation

# UNESCO World Heritage designations

## Biosphere Reserves

*People living and working in partnership  
with nature, and harmonising  
ecosystem health with sustainable use  
of natural resources*

You are entering the

# Noosa Biosphere Reserve

A celebration of community  
and environment



Noosa Heads  
National Park

